

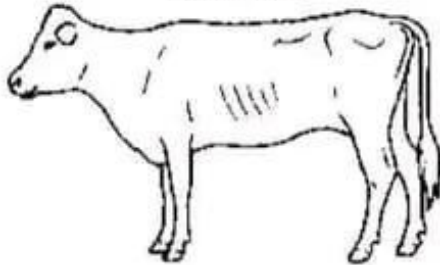
Body score 1

BODY SCORE-1

- Extremely thin. No fat in brisket or tail docks.
- All skeletal structures are visible.
- Dull hair
- May be diseased and survival during stress is doubtful



Cattle with body score 1



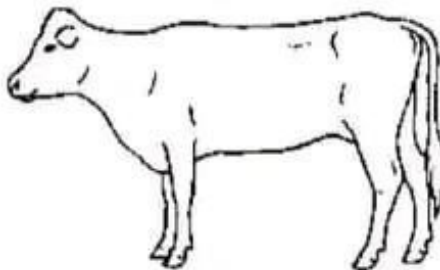
Body score 2

BODY SCORE-2

- Thin. Vertebrae, hips and pin bone prominent.
- Some tissue cover around tail dock, hip bones and the flank.
- Muscle tissue evident but not abundant, health may be OK.



Cattle with body score 2



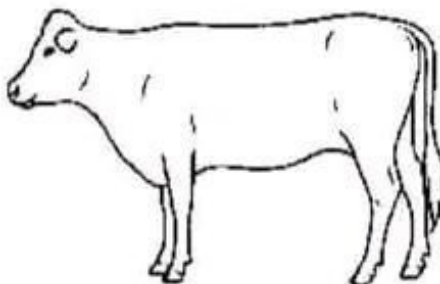
Body score 3

BODY SCORE-3

- Ribcage only slightly visible.
- Fat deposit behind shoulder obvious, ideal condition for calving.
- Fat deposit in brisket area.
- Hook and pin bone visible, but not prominent.



Cattle with body score 3



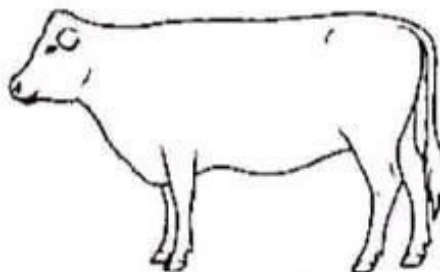
Body score 4

BODY SCORE-4

- Skeletal structure difficult to identify.
- Obvious fat deposits behind shoulder and tail head.
- Flat appearance to the top line.
- Folds of fat starting to develop over ribs and thighs.



Cattle with body score 4 may have metabolic problems at calving.



Body score 5

BODY SCORE-5

- Animal is obese, flat appearance dominates.
- Brisket is heavy and bone structure not noticeable.
- Tail head and hip bones completely buried in folds of fat.
- Back is flat and completely covered by fat.
- Mobility impaired by large fat deposits



Cattle with body score 5 and above have high probability of metabolic and breeding problems.